

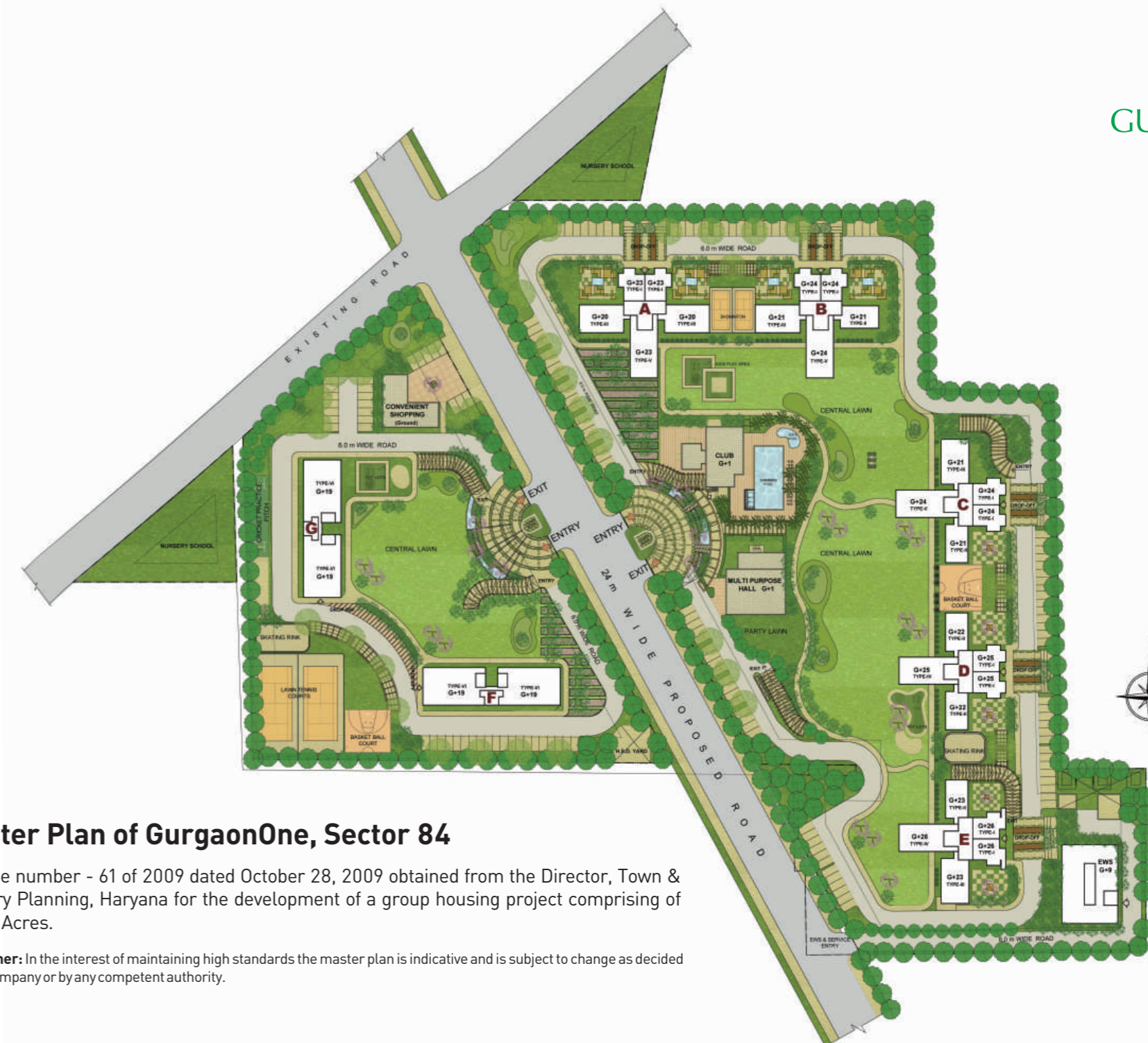


ALPHA G:CORP DEVELOPMENT PRIVATE LIMITED
Corporate office: Golf View Corporate Towers Wing A
Golf Course Road, Sector-42, Gurgaon - 122002
Phone: +91 124 4831111 • Fax: +91 124 4831100
www.alphagcorp.com

A partner of
Morgan Stanley



Apartment Plans

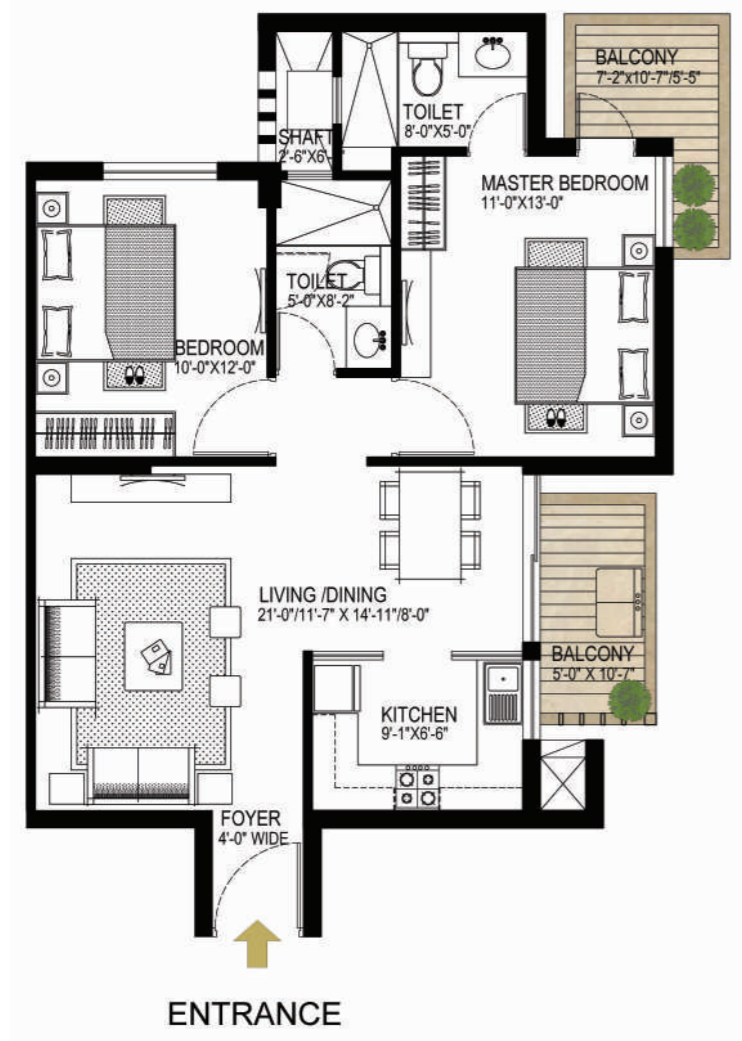


Master Plan of GurgaonOne, Sector 84

License number - 61 of 2009 dated October 28, 2009 obtained from the Director, Town & Country Planning, Haryana for the development of a group housing project comprising of 12.515 Acres.

Disclaimer: In the interest of maintaining high standards the master plan is indicative and is subject to change as decided by the company or by any competent authority.

Disclaimer: While every reasonable care has been taken in preparing this brochure, Alpha G: Corp Development Private Limited, on behalf of the promoters, reserves the right to add/delete specifications, facilities, terms & conditions as may be required and does not form part of an offering or contract.

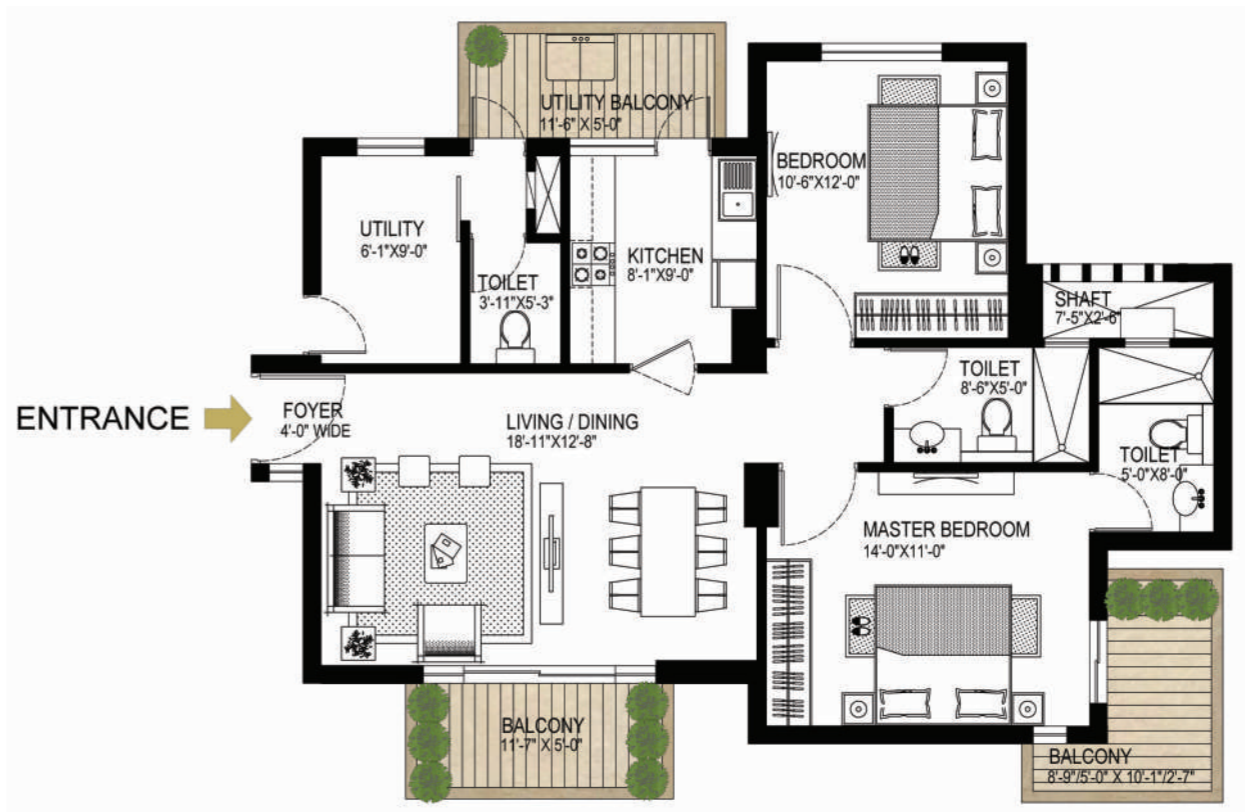
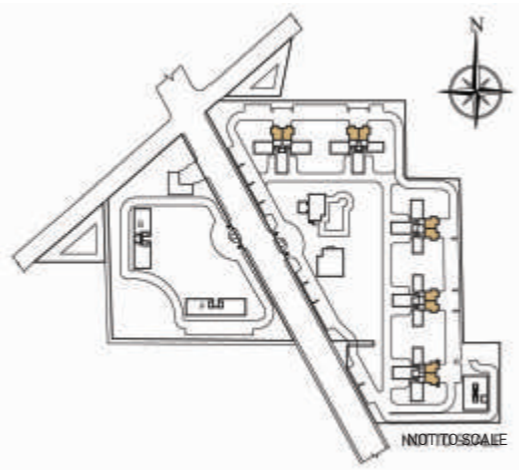


TYPICAL APARTMENT (UNIT-I)
TOWER A,B,C,D&E

- In the interest of maintaining high standards, all floor plans, layout plans, areas, dimensions and specifications are indicative and are subject to change as decided by the company or by any competent authority
- Soft furnishing, furniture and gadgets are not part of the offering
- 1 sqmt.=10.764 sqft.



2 BED ROOM UNIT		
UNIT AREAS	SQ.MTS.	SQ. FT.
SALEABLE AREA	109.73	1181

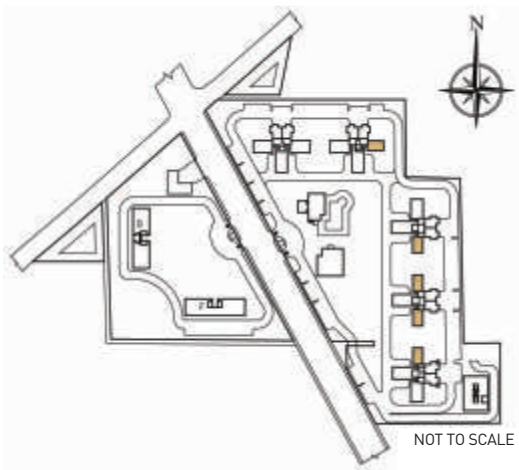


TYPICAL APARTMENT (UNIT-II)
TOWER - B,C,D & E

- In the interest of maintaining high standards, all floor plans, layout plans, areas, dimensions and specifications are indicative and are subject to change as decided by the company or by any competent authority
- Soft furnishing, furniture and gadgets are not part of the offering
- 1 sqmt.=10.764 sqft.



2 BED ROOM UNIT WITH UTILITY		
UNIT AREAS	SQ.MTS.	SQ. FT.
SALEABLE AREA	132.57	1427



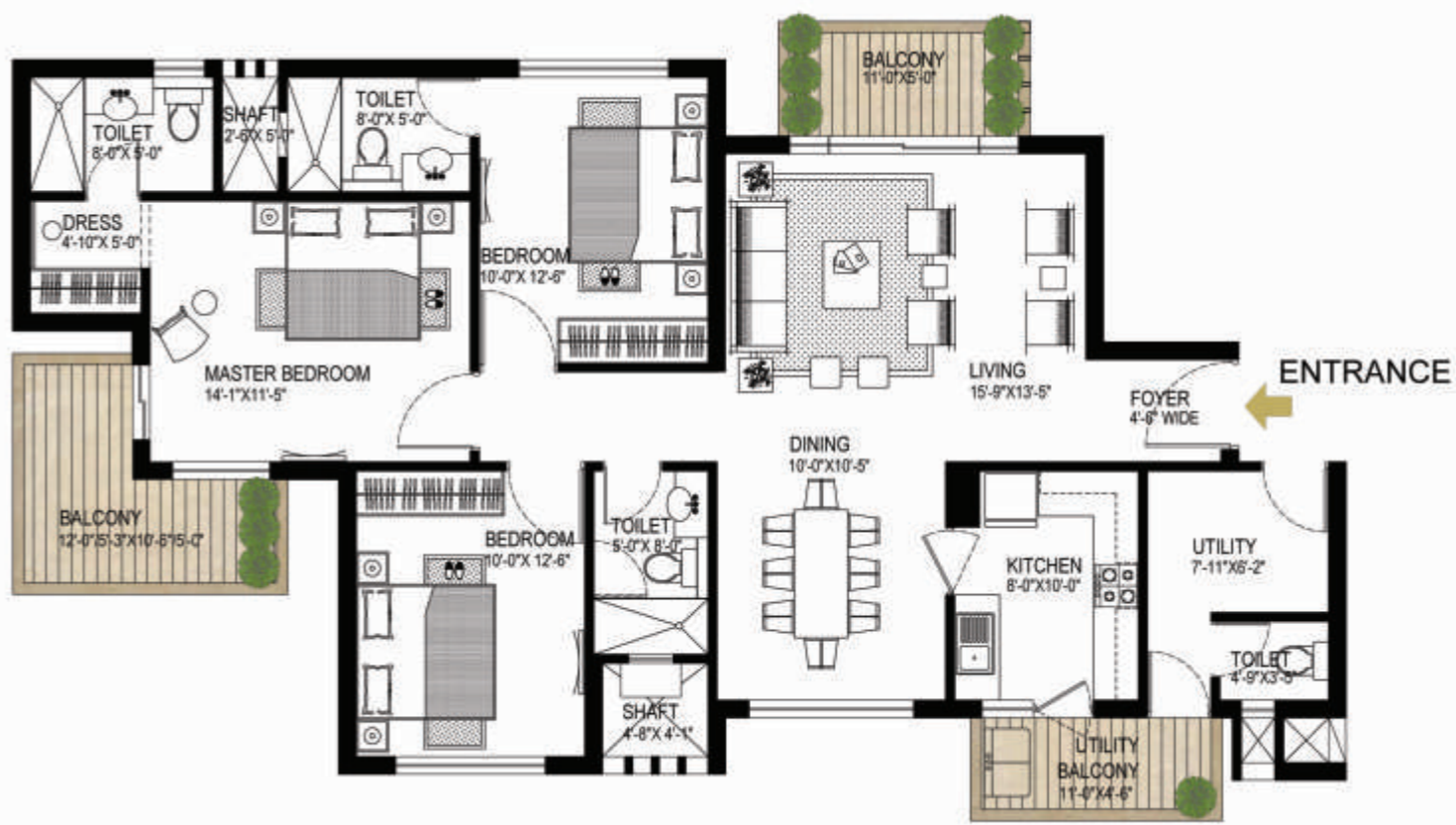
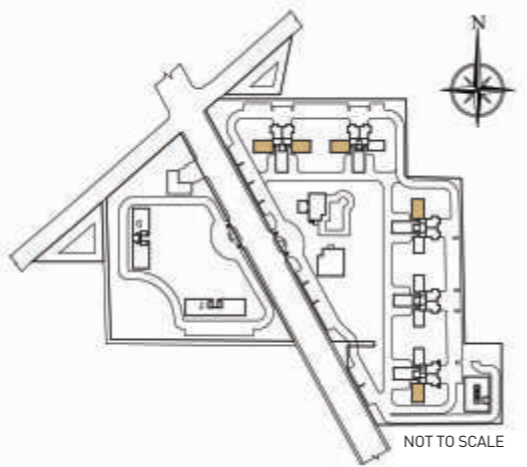


TYPICAL APARTMENT (UNIT-III)
TOWER A,B,C & E

- In the interest of maintaining high standards, all floor plans, layout plans, areas, dimensions and specifications are indicative and are subject to change as decided by the company or by any competent authority
- Soft furnishing, furniture and gadgets are not part of the offering
- 1 sqmt.=10.764 sqft.



3 BED ROOM UNIT WITH UTILITY		
UNIT AREAS	SQ.MTS.	SQ. FT.
SALEABLE AREA	169.60	1826

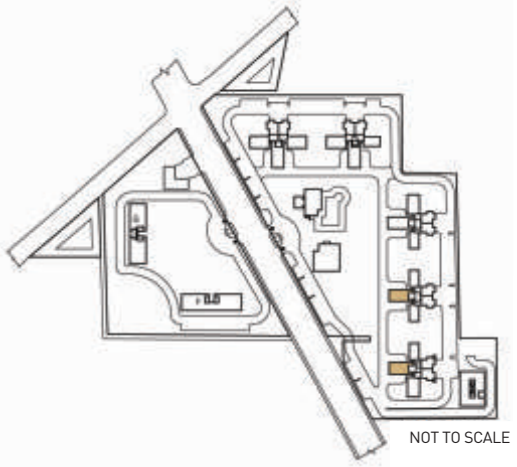


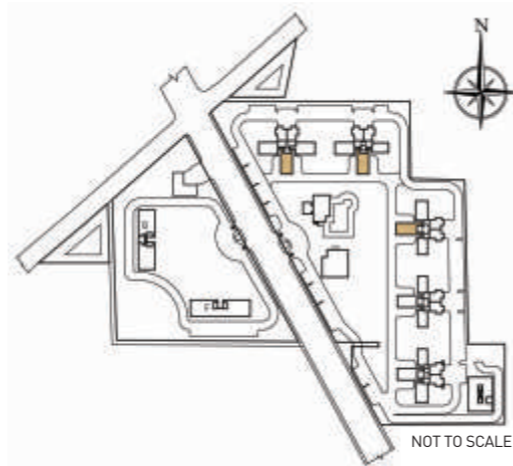
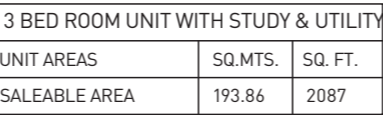
TYPICAL APARTMENT (UNIT-IV)
TOWER D & E

- In the interest of maintaining high standards, all floor plans, layout plans, areas, dimensions and specifications are indicative and are subject to change as decided by the company or by any competent authority
- Soft furnishing, furniture and gadgets are not part of the offering
- 1 sqmt.=10.764 sqft.

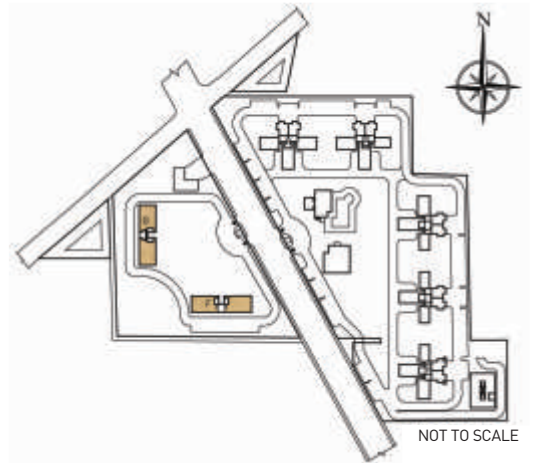
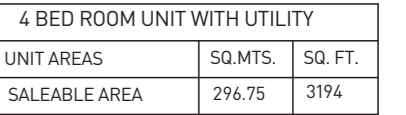


3 BED ROOM UNIT(L) WITH UTILITY		
UNIT AREAS	SQ.MTS.	SQ. FT.
SALEABLE AREA	178.68	1923





- In the interest of maintaining high standards, all floor plans, layout plans, areas, dimensions and specifications are indicative and are subject to change as decided by the company or by any competent authority
- Soft furnishing, furniture and gadgets are not part of the offering
- 1 sqmt.=10.764 sqft.
- The partition for study room is indicative only and is not a part of the offering. The apartment owner shall make it as per his interior/aesthetic requirement.



- In the interest of maintaining high standards, all floor plans, layout plans, areas, dimensions and specifications are indicative and are subject to change as decided by the company or by any competent authority
- Soft furnishing, furniture and gadgets are not part of the offering
- 1 sqmt.=10.764 sqft.

Specifications for GurgaonOne, Sector 84, Gurgaon

APARTMENT SPACES	FLOOR	WALLS	CEILING	DOORS	WINDOWS/ GLAZING/ EXTERNAL DOORS	ELECTRICAL	SANITARY
Living Room / Dining / Lobby / Family Room	Vitrified / Ceramic Tiles	Cement Plaster with Acrylic Emulsion Paint	Cement Plaster with Oil Bound Distemper	Entrance Door: Hard Wood frame. Polished Veneer finished solid core flush door shutters	PVC or Anodised / Powder coated aluminium frames & glazed shutters.	Modular switches and sockets	
Master Bed Room and Master Dress	Laminated Wooden Floor	- Do -	- Do -	Hard Wood Frame. Flush Door/Moulded Skin Door Shutters	- Do -	- Do -	
Other Bed Room(s)	Vitrified / Ceramic Tiles	- Do -	- Do -	- Do -	- Do -	- Do -	
Kitchen	Anti-Skid Vitrified / Ceramic Tiles	Combination of Cement Plaster with Acrylic Emulsion Paint & Ceramic Tiles	- Do -	- Do -	- Do -	- Do - Plated Fittings.	Granite Counter Top. Stainless Steel Single Bowl Sink and Chrome
Balconies / Terraces	Anti-skid Ceramic Tiles	Cement Plaster with Exterior Grade Texture Paint	Cement Plaster with Cement Paint	External Door: PVC or Anodised / Powder Coated Aluminium Frames & Glazed Shutters.	- Do -	- Do -	

APARTMENT SPACES	FLOOR	WALLS	CEILING	DOORS	WINDOWS/ GLAZING/ EXTERNAL DOORS	ELECTRICAL	SANITARY
Master Toilet	- Do -	Combination of Cement Plaster with Acrylic Emulsion Paint & Ceramic Tiles	Cement Plaster with Oil Bound Distemper	Hard Wood Frame. Flush Door / Moulded Skin Door Shutters	- Do -	- Do -	White Chinaware Chrome Plated Fittings, Granite Counter Top & Mirror
Other Toilets	- Do -	- Do -	- Do -	- Do -	- Do -	- Do -	- Do -
Utility Room	- Do -	Cement Plaster with Oil Bound Distemper & Ceramic Tiles	- Do -	- Do -	- Do -	- Do -	White Chinaware, Chrome Plated Fittings.
Lobbies	Kotah Stone	Cement Plaster with Acrylic Emulsion Paint. Marble on Lift Fascia	- Do -		- Do -	- Do -	

NOTE:

The aforesaid items are indicative only. Every effort shall be made to reflect the same in the apartments under sale. Any variation / revision in specifications of these items may be done without further notice.